

POS CASH DRAWER

FEMALE INTERFACE



The receptacle is mounted inside all Cash Drawers

The Female Connector has been designed to connect CHEE SHYE Cash Drawer to various Point of Sale receipt printers or terminals using interchangeable and detachable cables. Female connector is designed in the base.

Model: 913-F



16.5"(W) x 16.5" (L) x 3.6" (H) /
420 (W) x 420 (L) x 91(H)mm



Cash Drawer Connector

Model:350-F



13.8"(W) x 13.8"(L) x 3.2"(H) /
350(W) x 350(L) x 80(H)mm



The smart way to connect your cash drawer to your PC

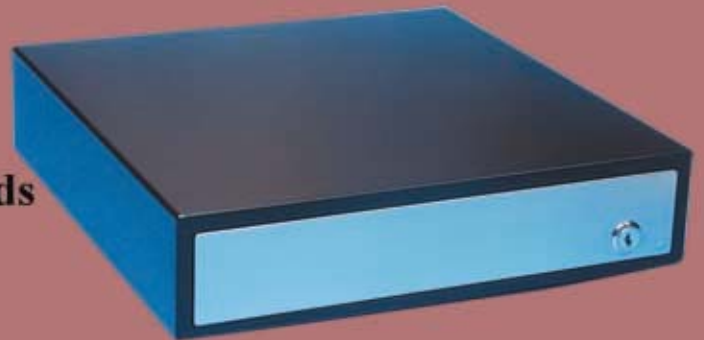
POS CASH DRAWER

Introduction

CS cash drawers are essential components of any POS systems. Cash drawers are either serial port or receipt printer interfaces. Drawers with serial interfaces plug into a serial port (COM port) on a computer. Receipt printer interface drawers plug into a special connector on most receipt printers.

Construction

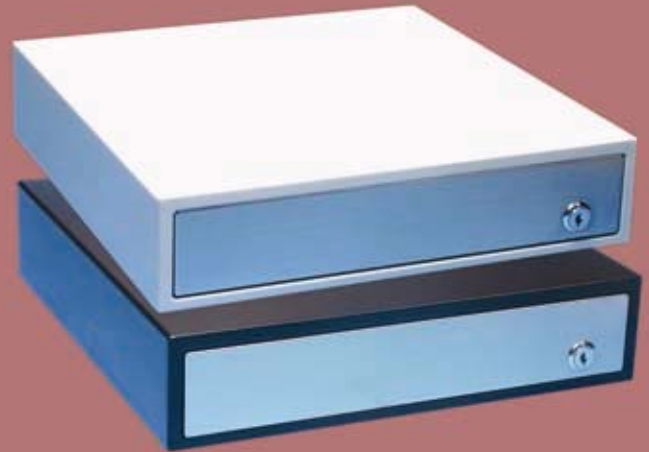
- Steel reinforced 1-piece body that adds strength providing a solid foundation
- Heavy gauge, all steel construction
- Heavy duty metal drawer with keylock
- Stainless steel front panel
- No-Screw construction
- 3-Position lock provides maximum cash security
- MTBF: 1,000,000 cycle
- 1 year warranty



Model:913-F



Model:350-F



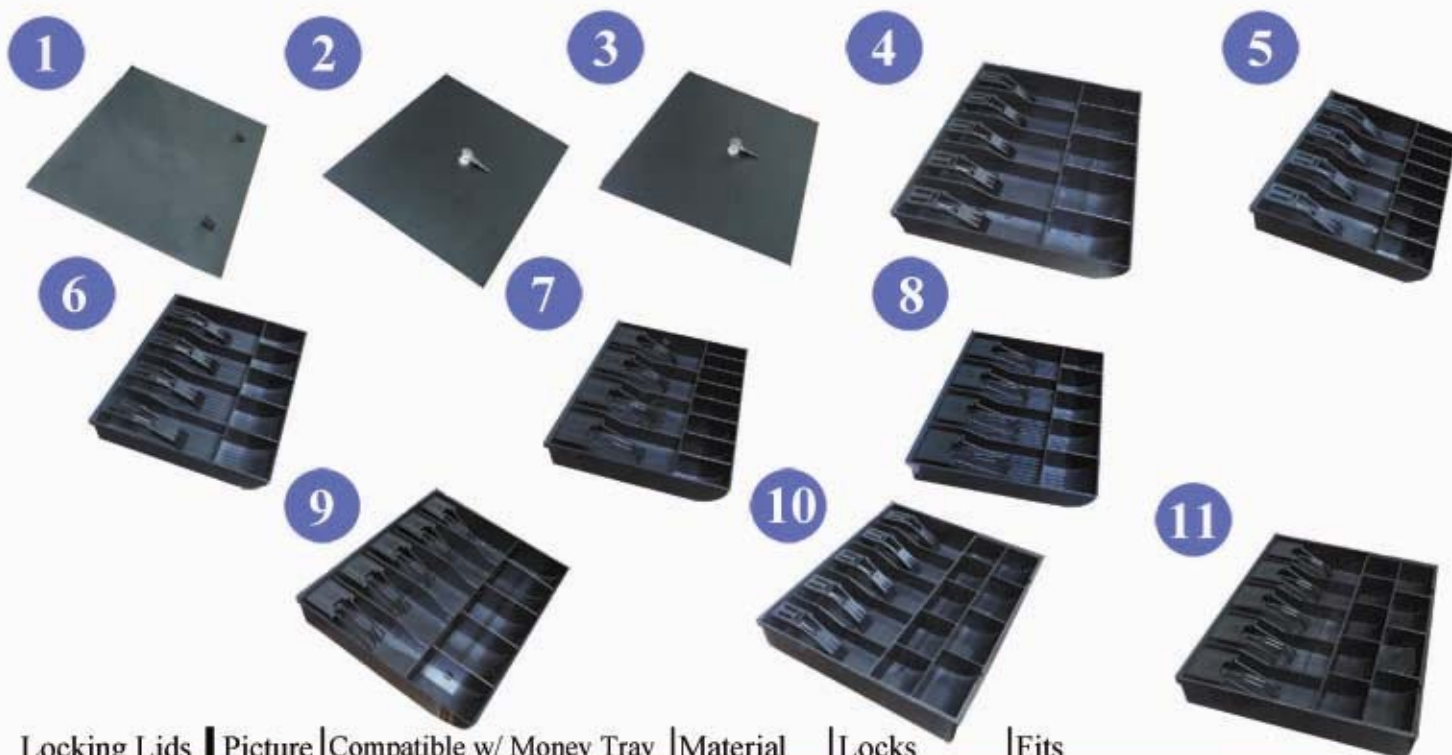
Specifications

	913-F	350-F
Drawer	Heavy duty metal drawer with keylock	
Casing	Robust metal construction	
Front-Panel	Stainless steel front (standard) / Painted Front - color matched to case (option)	
Money Tray Insert	Removable ABS plastic with 9 coin/ 5 bill or 5 coin / 5 bill compartments	Removable ABS plastic with 8 coin / 4 bill or 5 coin / 4 bill compartments
Slip Slot	Yes	X
Interface	Solenoid interface to any receipt print (Star, Epson, Citizen) and RS232	
Key - Release	3 - function lock	
Locking Lid	Yes	X
Color	Pear White or Black	
MTBF	1,000,000 operations	
Solenoid	12V or 24V	
Mounting Bracket	Yes	Yes
Drawer Mode Solenoid Lock Manual	Open by drive signal to the solenoid Mechanically locks the drawer Open by key	
Dimensions	420(W) x 420(L) x 91(H) mm 16.5" (W) X 16.5"(L) x 3.6"(H)	350(W) x 350(L) x 80(H)mm 13.8"(W) x 13.8"(L) x 3.2"(H)
Weight	7.35 kgs / 16.20 lbs	4.60kgs / 10.12 lbs

Cable -1500mm / 60" UL cable (Two side RJ12) is included with each cash drawer for the connection



886-2-26816639



Locking Lids	Picture	Compatible w/ Money Tray	Material	Locks	Fits
T-100	1	T-105,T-108,T-109,T-121	ABS Plastic	No(lock box)	906,913
T-101	2	T-109,T-121	Metal	Yes	906,913
T-102	3	T-105,T018	Metal	Yes	906,913

Money Tray	Picture	Size of Insert (W) x (L) x (H)	Bill Clip Material	Cmptrmnt. Bull/Coin	Unique Features	Fits
T-105	4	370mm x 315mm x 64mm 14.6" x 12.4" x 2.5"	PC Plastic	5/5	Adjustable	906,913
T-106	5	304mm x 253mm x 55mm 12" x 10" x 2.2"	PC Plastic	4/4 or 4/8	Adjustable	350,D-106
T-107	6	304mm x 253mm x 55mm 12" x 10" x 2.2"	PC Plastic	3/5 or 4/5	Adjustable	350,D-106
T-108	9	370mm x 315mm x 64mm 14.6" x 12.4" x 2.5"	Metal	5/5	Adjustable	906,913
T-109	10	370mm x 315mm x 64mm 14.6" x 12.4" x 2.5"	PC Plastic	5/8 or 5/9	Coin section nests in main tray and is removable	906,913
T-119	7	304mm x 253mm x 55mm 12" x 10" x 2.2"	Metal	4/4 or 4/8	Adjustable	350,D-106
T-120	8	304mm x 253mm x 55mm 12" x 10" x 2.2"	Metal	3/5 or 4/5	Adjustable	350,D-106
T-121	11	370mm x 315mm x 64mm 14.6" x 12.4" x 2.5"	Metal	5/8 or 5/9	Coin section nests in main tray and is removable	906,913

Under Counter Mounting Brackets

	Picture	Size (W) x (L)	Fits
T-112	12	65 mm x 410mm 2.6" x 16.2"	913
T-113	12	65 mm x 340mm 2.6" x 13.4"	350

12



Manufacturer

CHEE SHYE INDUSTRY CO., LTD.
 No.331, Sec.1, Pao An St., Shu Lin City Taipei Hsien, Taiwan
 TEL:886-2-26816639 / 26852391 / 26852392
 FAX:886-2-26828466 E-mail:sales@cheeshye.com
<http://www.cheeshye.com>

886-2-26816639